



LOCATION MAP N.T.S.



CONCEPTUAL LANDSCAPE PLAN

This site plan is conceptual in nature and subject to change without notice.

LANDSCAPE DEVELOPMENT SUMMARY

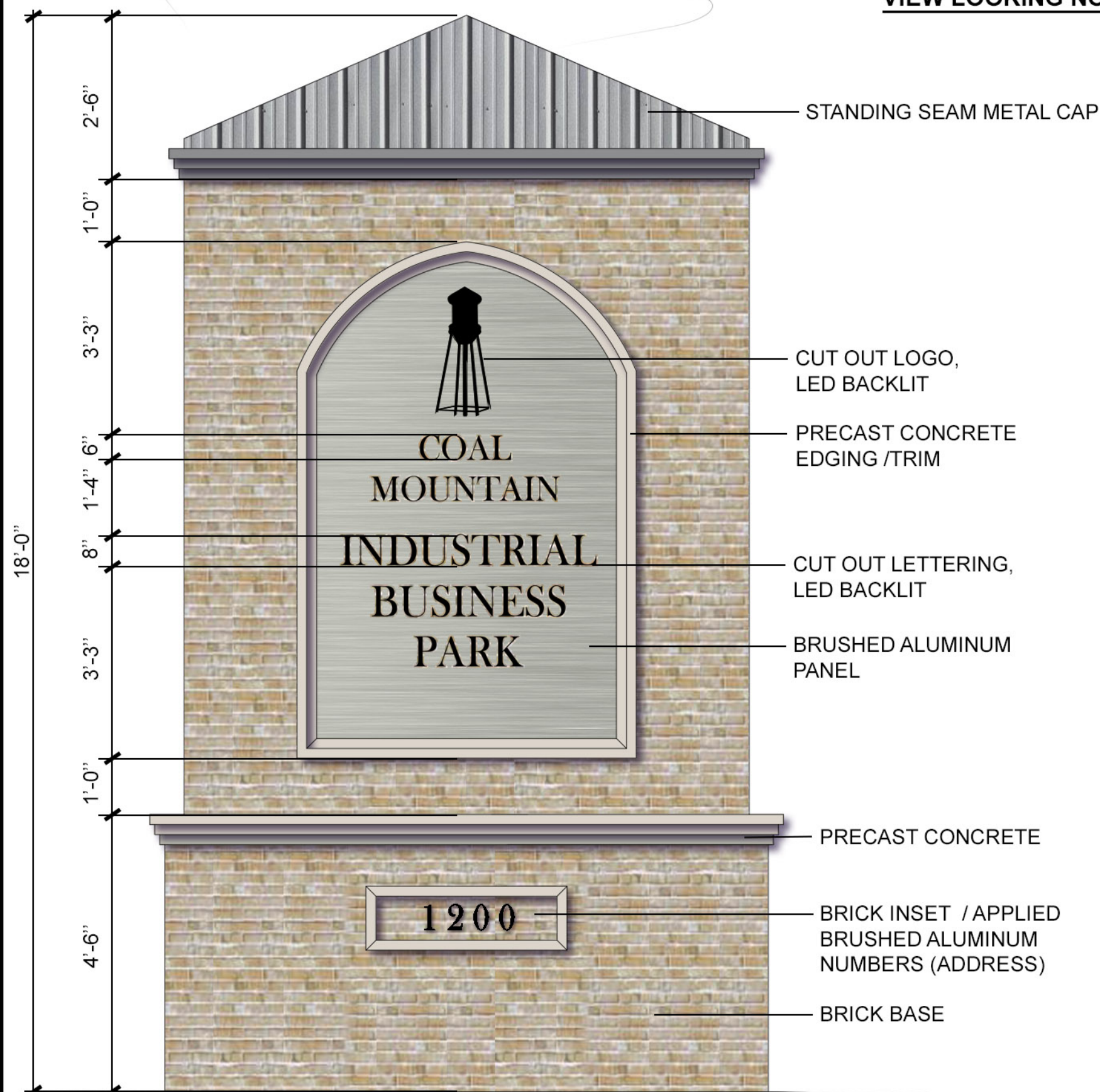
Coal Mountain Overlay Requirements:

- Min. 20' wide landscape strip on proposed rights-of-way (Ord. B-2)
 Note: (Along Church Road and Martin Road the 20' wide landscape strip that is within the existing stream buffers and where existing vegetation is abundant will remain undisturbed. Landscape planting within this areas is not feasible and would require removal of existing native woodland vegetation within the stream buffers.) (Ord. B-G Buffers)
- Min. of 40% of all trees and shrubs shall be evergreen plant material. (Ord. B-3a)
- Landscape strips include a min. (2) trees and (6) shrubs per fifty (50) linear feet, with a min. of 60% overstory trees (Ord. B-3b)
- Overstory trees shall be min. of (3) inch caliper and at least (10) foot height at time of installation. Understory shall have min. (2) inch caliper and at least (8) foot height at time of installation. All shrubs shall be min. (2) feet high at time of planting. (Ord. B-3c)
- Sixty (60%) percent of all trees in landscape strips along Setting-down Road and Martin Road shall be Nuttall Oak. (Ord. B-3f)
- Thirty-three (33%) percent of all required trees in landscape strips along Setting Down Road shall be Redbud 'The Rising Sun' (Ord. B3-g)
- Species selected for installation will adhere to the Coal mountain Overlay Approved Plant List. (Table 21.12) (Ord. B-5) Refer to the landscape planting palette for selected species for this project.
- Loading areas shall be screened from the right-of-way and from view of public areas. (Ord. H-1 Screening)

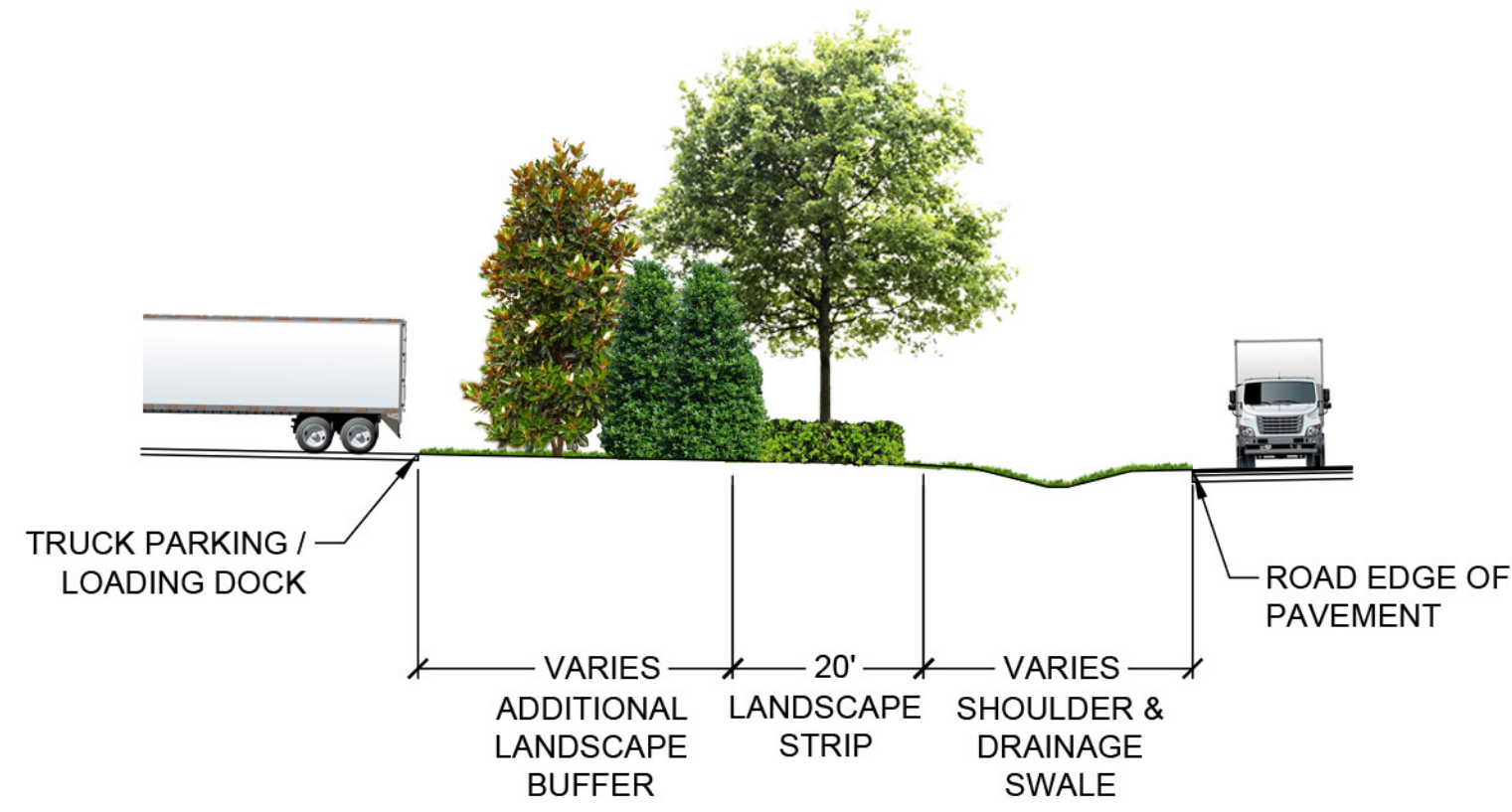
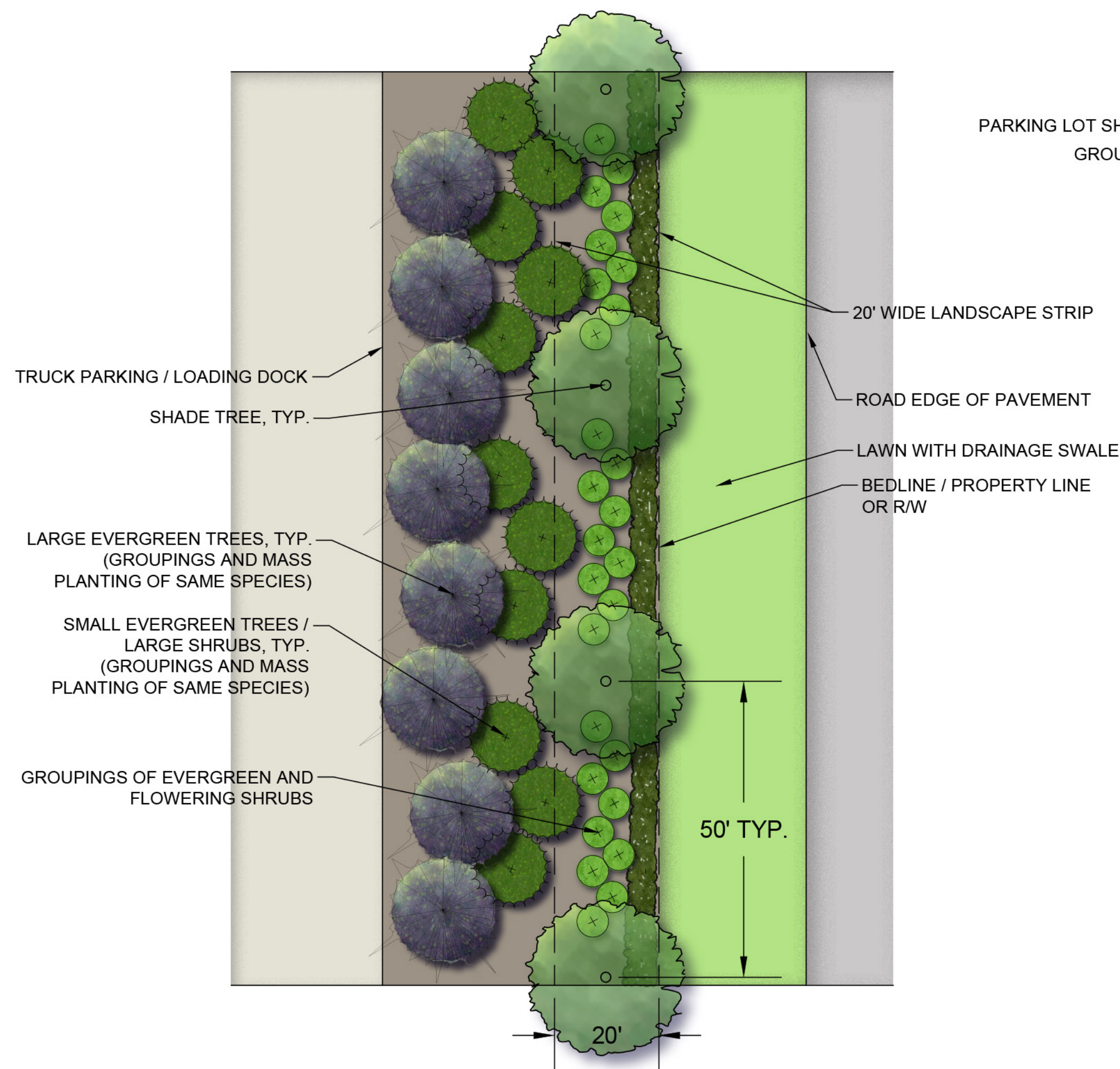




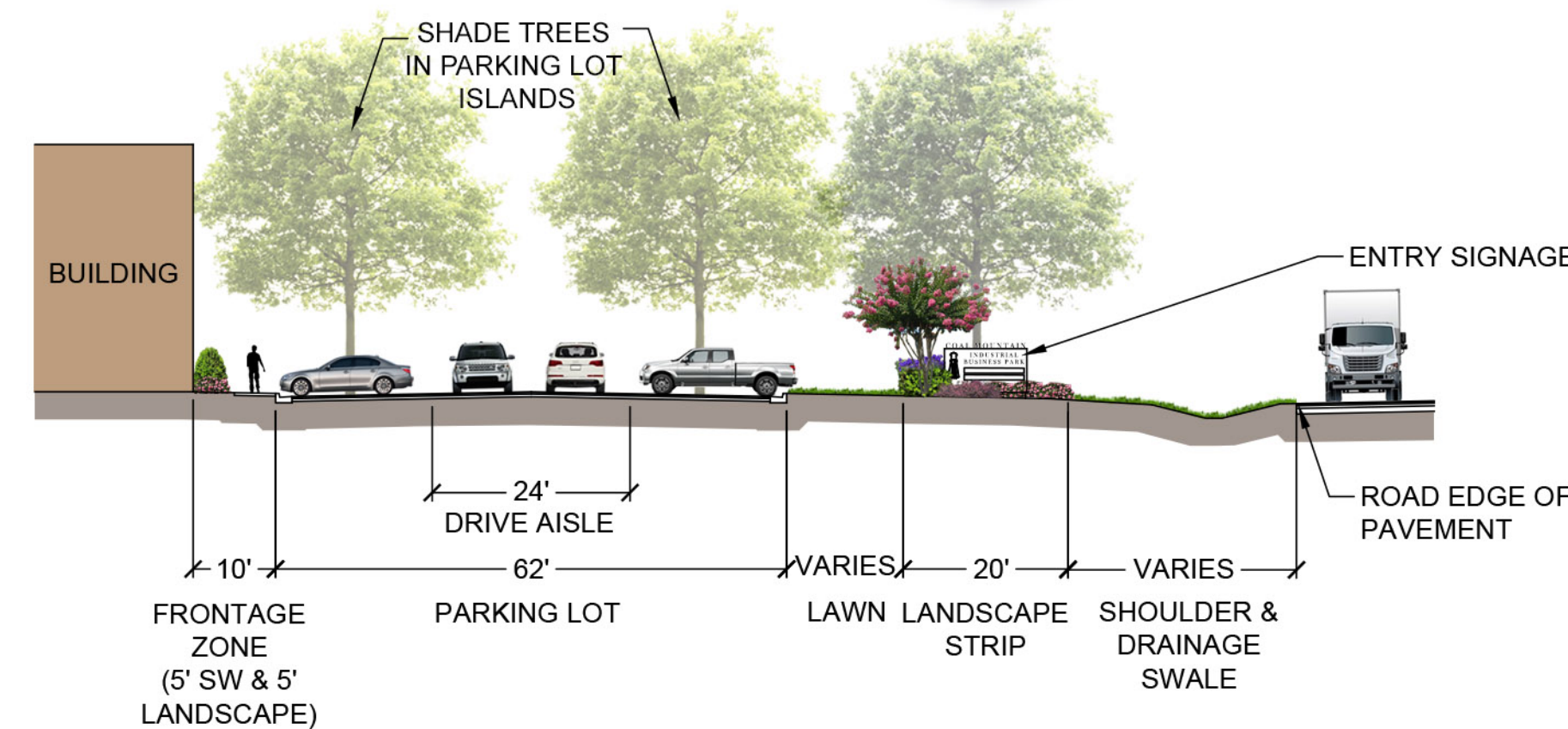
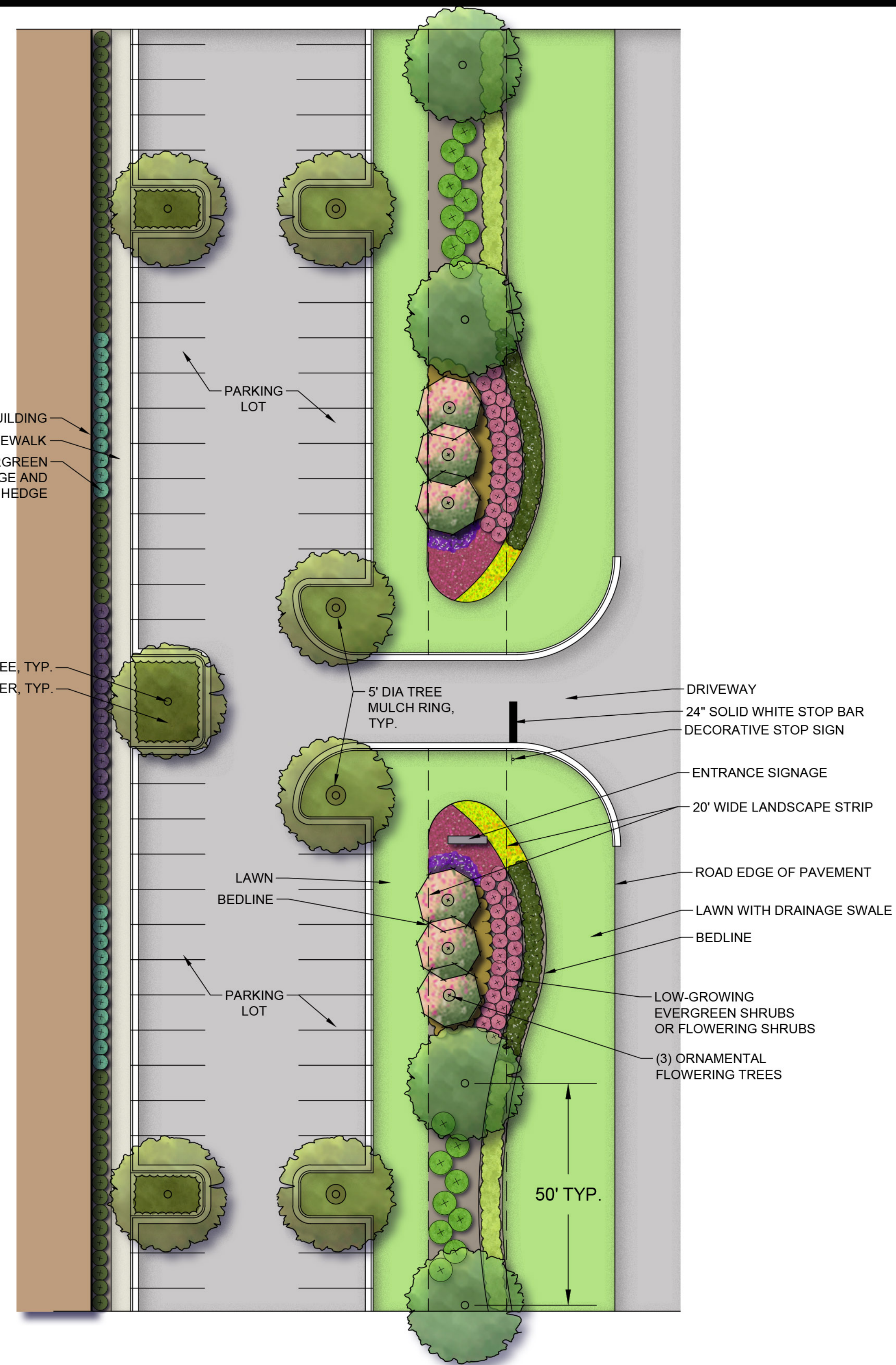
**MONUMENT SIGNAGE GATEWAY AND LANDSCAPE
VIEW LOOKING NORTH FROM ROUNDABOUT**



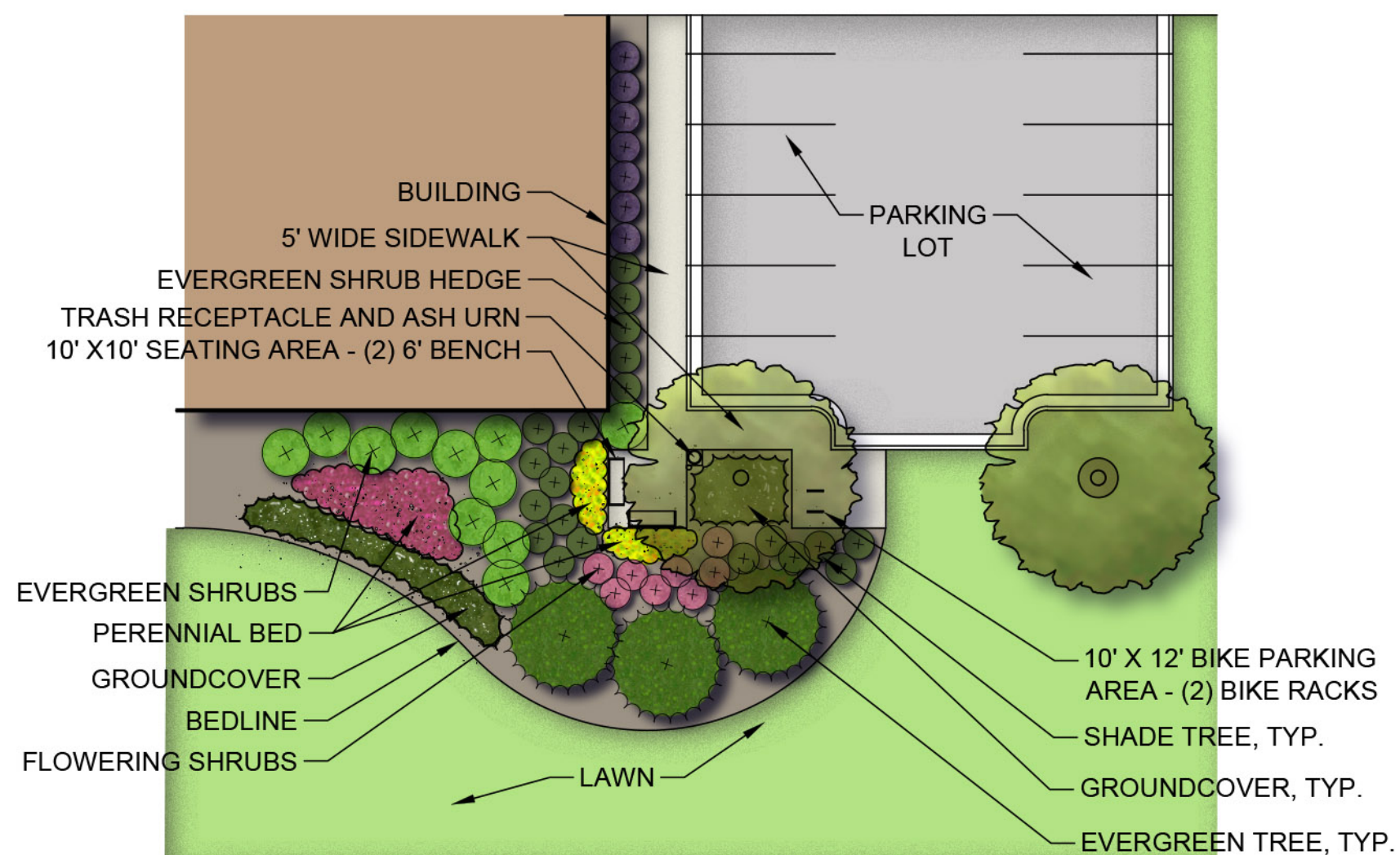
MONUMENT GATEWAY SIGNAGE CONCEPT



**SETTINGDOWN ROAD TYPICAL PLANTING
BUFFER AT TRUCK DOCK PARKING**



**TYPICAL PLANTING SECTION ALONG SETTINGDOWN ROAD AND
CHURCH ROAD IN FRONT OF BUILDINGS 1 AND 3**



**TYPICAL SEATING AND BICYCLE PARKING AREA
NOTE: EXAMPLE SHOWN AT SOUTHEAST CORNER OF BLDG. 3.**

LARGE AND MEDIUM DECIDUOUS TREES

BOTANICAL NAME

Acer rubrum 'October Glory'
Ginkgo biloba 'Autumn Gold'
Quercus nuttallii
Quercus phellos 'Hightower'
Taxodium distichum 'Shawnee Brave'
Ulmus parvifolia 'Allee'

COMMON NAME

October Glory red maple
Maidenhair tree
Nuttall oak
Hightower willow oak
Bald cypress
Lacebark elm 'Allee'



O.G. RED MAPLE



A.G. GINKGO



NUTTALL OAK



WILLOW OAK



BALD CYPRESS



ALLEE ELM



ALLEE ELM

ORNAMENTAL FLOWERING TREES

BOTANICAL NAME

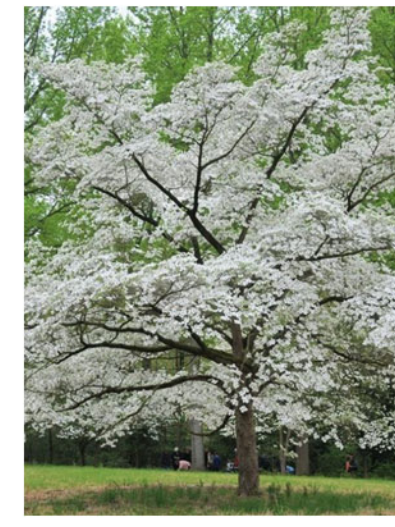
Cercis canadensis 'Merlot'
Cornus florida 'Cherokee Princess'
Lagerstroemia indica SPP.
Magnolia x Soulangeana
Vitex agnus-castus 'Shoal Creek'

COMMON NAME

Merlot redbud
Flowering dogwood
Crape myrtle species
Saucer magnolia
Shoal Creek chaste tree



MERLOT REDBUD



DOGWOOD



PINK CRAPE MYRTLE



WHITE CRAPE MYRTLE



SAUCER MAGNOLIA



SAUCER MAGNOLIA



CHASTE TREE

EVERGREEN TREES

BOTANICAL NAME

Cedrus Deodara
Cryptomeria japonica 'Radicans' & 'Yoshino'
Ilex x 'Conive'
Ilex x 'Conaf'
Ilex x 'Nellie Stevens'
Thuja 'Green Giant'

COMMON NAME

Deodar cedar
Japanese cedar
Festive red holly
Oakleaf holly
Nellie Stevens holly
Green giant arborvitae



DEODAR CEDAR



JAPANESE CEDAR



FESTIVE HOLLY



OAKLEAF HOLLY



NELLIE R. ST. HOLLY



ARBORVITAE



S. MAGNOLIA

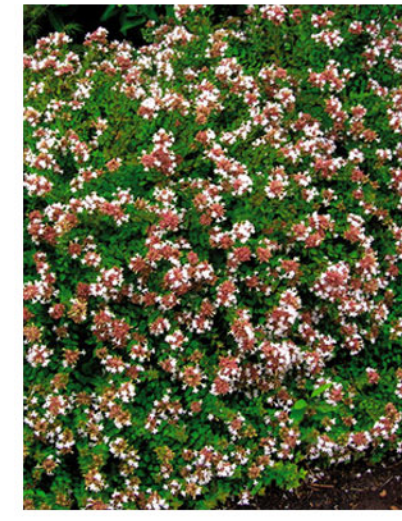
SHRUBS AND GRASSES

BOTANICAL NAME

Abelia x 'Rose Creek'
Buxus s. 'Suffruticosa'
Camellia sasangua 'Shishi Gashira'
Distylium 'Vintage Jade'
Distylium 'Linebacker'
Gardenia jasminoides 'Kleim's Hardy'
Hydrangea paniculata 'Limelight'
Ilex cornuta 'Needlepoint'
Ilex vomitoria 'Nana'
Juniperus conferta 'Blue Pacific'
Loropetalum ch. 'Crimson Fire'
Osmanthus fragrans
Rosa 'Pink Drift'
Miscanthus sinensis 'Adagio'

COMMON NAME

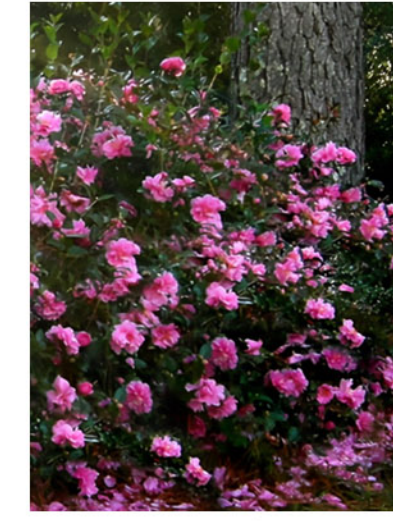
Rose creek abelia
Boxwood 'Wintergreen'
Shishi Gashira camellia
Vintage Jade distylium
Linebacker distylium
Kleim's Hardy gardenia
Limelight hydrangea
Needlepoint holly
Dw. yaupon holly
Blue Pacific juniper
Crimson Fire fringe flower
Fragrant tea olive
Pink drift rose
Adagio miscanthus



ROSE CREEK ABELIA



BOXWOOD



CAMELLIA



V. J. DISTYLIUM



LB DISTYLIUM



K. H. GARDENIA



LIMELIGHT H.



NEEDLEPOINT



DW. YAUPON HOLLY



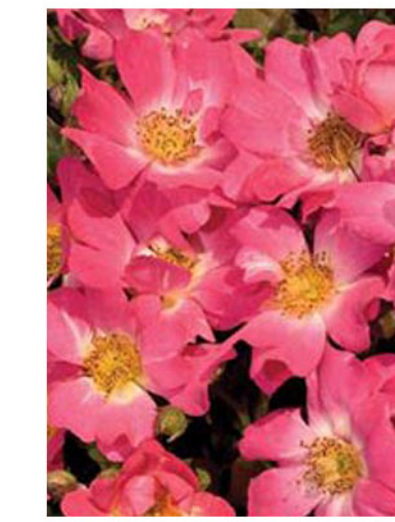
JUNIPER



LOROPETALUM



F. TEA OLIVE



PINK DRIFT ROSE



MISCANTHUS

PERENNIALS / GROUNDCOVERS

BOTANICAL NAME

Echinacea purpurea
Hemerocallis 'Happy Returns'
Hemerocallis 'Little Grapette'
Iris sibirica
Leucanthemum x superbum
Liriope muscari
Rudbeckia hirta
Trachelospermum asiaticum

COMMON NAME

Purple Coneflower
Happy return daylily
Little grapette daylily
Siberian iris
Shasta Daisy
Lily-turf
Black-Eyed Susan
Asiatic jasmine



PURPLE CONEFLOWER



H. R. DAYLILY



L. G. DAYLILY



SIBERIAN IRIS



SHASTA DAISY



LIRIOPE



BLACK-EYED SUSAN



ASIATIC JASMINE



TIFTUF BERMUDA

TURF AREAS

BOTANICAL NAME

TifTuf

COMMON NAME

Tiftuff Bermuda Grass

BENCHES

MANUFACTURER:

Landscape Forms, Inc.
7800 E. Michigan Ave.
Kalamazoo, MI 49048

MODEL NO:

Melville Bench

DESCRIPTION:

6' length backed or backless type models, with or without arms, metal with powder coat finish, surface mount or embedded, wood option for exterior redwood, jarrah, or ipe.



TRASH RECEPTACLES AND ASH URN

MANUFACTURER:

Landscape Forms, Inc.
7800 E. Michigan Ave.
Kalamazoo, MI 49048

MODEL NO:

Trash Receptacle: Poe Litter

Ash Urn: Grenadier

DESCRIPTION:

Trash Receptacle: 34-gallon heavy-duty cast and extruded aluminum litter receptacle, powder coat finish, black polyethylene interior liner, lockable hinge side door, surface mount.

Ash Urn: Cast and extruded aluminum, powder coat finish, pin key opens top for emptying, available in wall mount, freestanding or removable unit



BICYCLE RACKS

MANUFACTURER:

Landscape Forms, Inc.
7800 E. Michigan Ave.
Kalamazoo, MI 49048

MODEL NO:

Emerson Bike Rack

DESCRIPTION:

Cast aluminum frame and cover plates, powder coated. Select from a wide variety of standard colors. Rack can either be surface mounted or embedded, set bike racks 30" apart and 24" from wall.



DECORATIVE SITE SIGNAGE

MANUFACTURER:

Brandon Industries
1601 Wilmeth Road
McKinney, TX 75069

MODEL NO:

SP3x12 - 3" x 12" smooth pole
SB-33 - Slipover base
FIN-B3 - Ball finial for HC post
FIN-A3 - Acorn finial
TS1218 - Trim
TSTOP30 - Trim
R7 - 8/12 - Reflective 12"x18" reserved parking sign
R1-1/30 - Reflective 30" stop sign

DESCRIPTION:

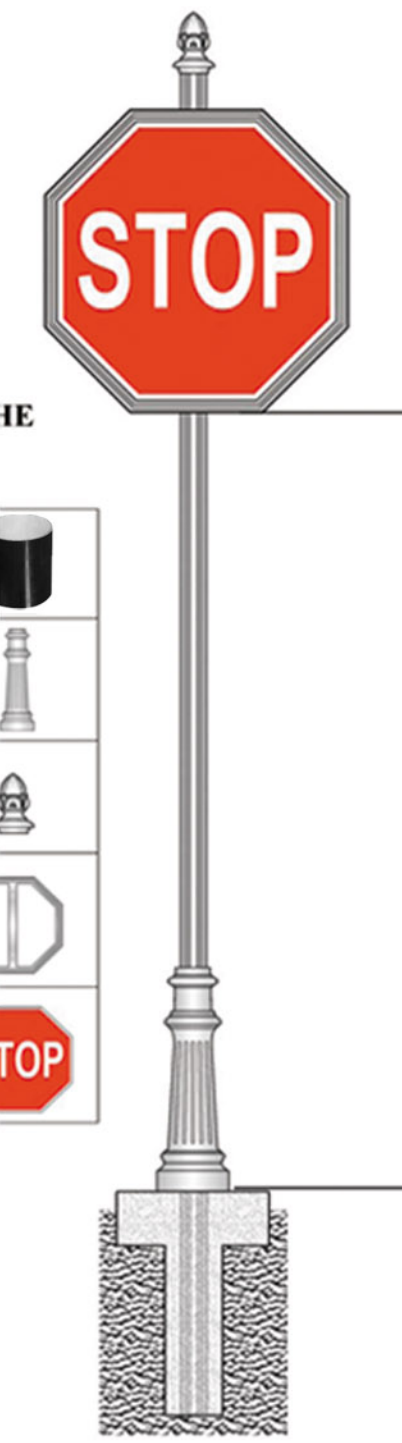
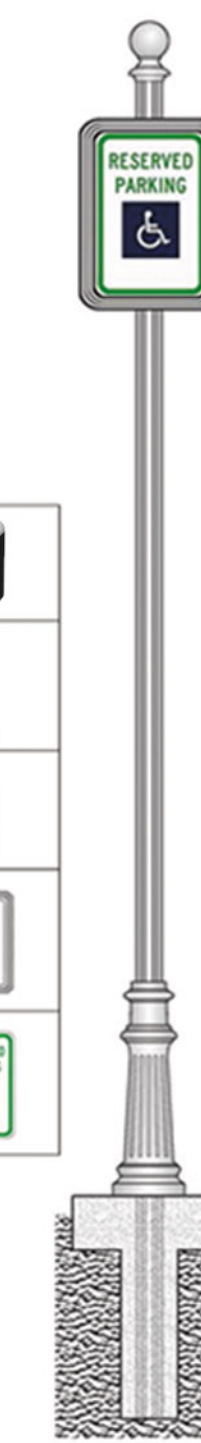
Pole and sign trim components to be aluminum, stainless steel fasteners, and black finish. Sign panel to be reflective with vinyl type.

THIS SIGN MADE FROM THE PARTS BELOW:

SP3x12 - 3" X 12" Extruded Aluminum .0125 Wall Thickness	
SB-33 - Slipover Base For 3" Pole Cast Aluminum	
FIN-B3 - Ball Finial For 3" Pole Cast Aluminum	
TS1218 - Trim For 12" x 18" Traffic Sign Cast Aluminum	
R7-8/12 Reflective 12" x 18" Reserved Parking Sign Specify Vinyl Type	

THIS SIGN MADE FROM THE PARTS BELOW:

SP3x12 - 3" X 12" Extruded Aluminum .0125 Wall Thickness	
SB-33 - Slipover Base For 3" Pole Cast Aluminum	
FIN-A3 - Acorn Finial For 3" Pole Cast Aluminum	
TSTOP30 - Trim For 30" Stop Sign Cast Aluminum	
R1-1/30 Reflective 30" Stop Sign Specify Vinyl Type	



ENTRY SIGNAGE CONCEPT

DESCRIPTION:

Custom Entry Identification Signage approximately (6' height X 10' length X 1' width). Corten steel wrap with development name and Logo cut out. Applied brushed aluminum lettering mounted to top of cap. Applied business name panels.

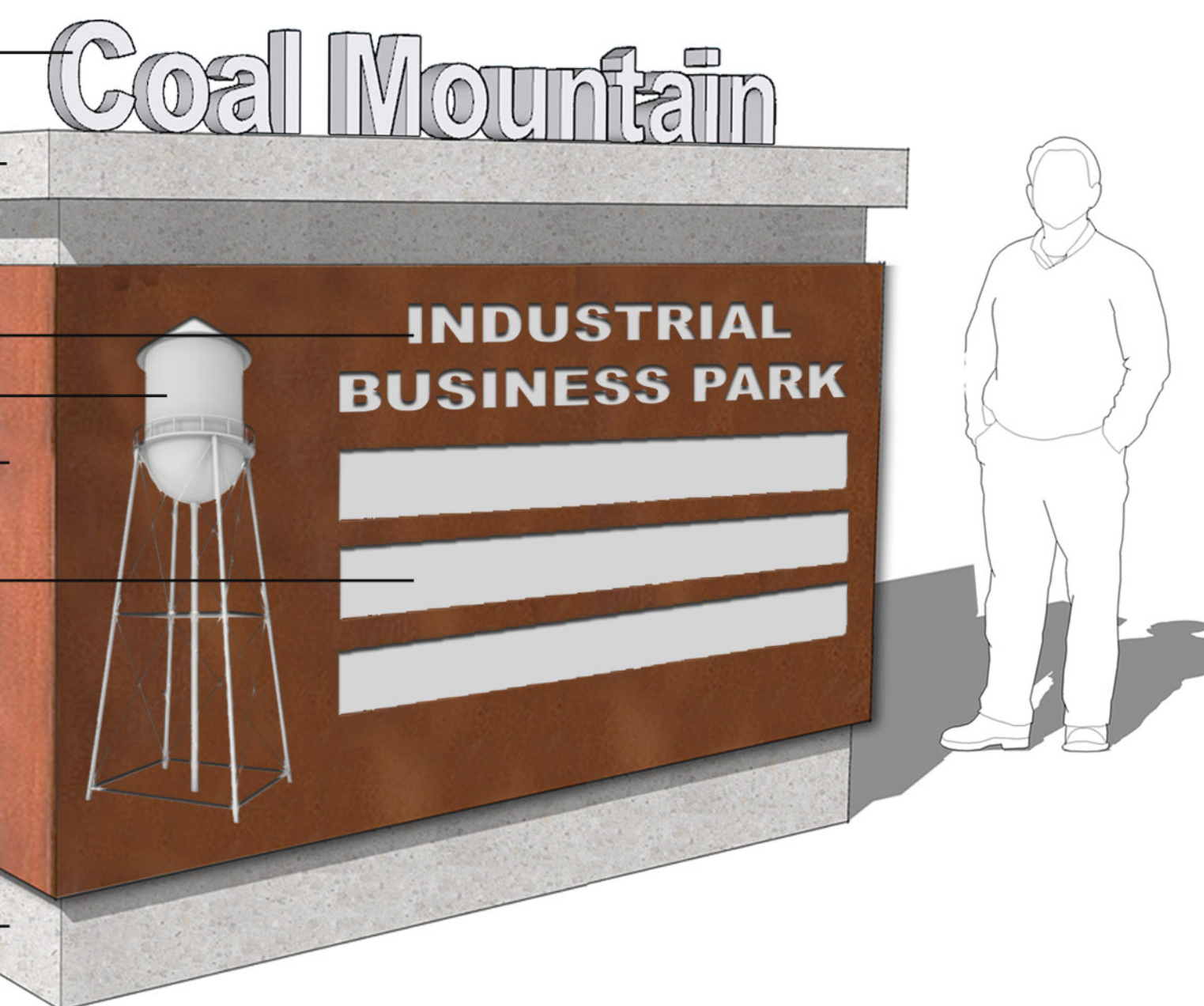


Internally Illuminated LED Letters
brushed aluminum appearance
Precast Concrete Cap

Cut out Letters, LED Backlit
Cut out Logo, LED Backlit
Corten Steel wrap

Business Sign Panels, LED Backlit

Poured Concrete Panel



DATE	COMMENT

DATE	COMMENT

**CONCEPTUAL
LANDSCAPE PERSPECTIVES**

Landscape perspectives are conceptual in nature and subject to change without notice.

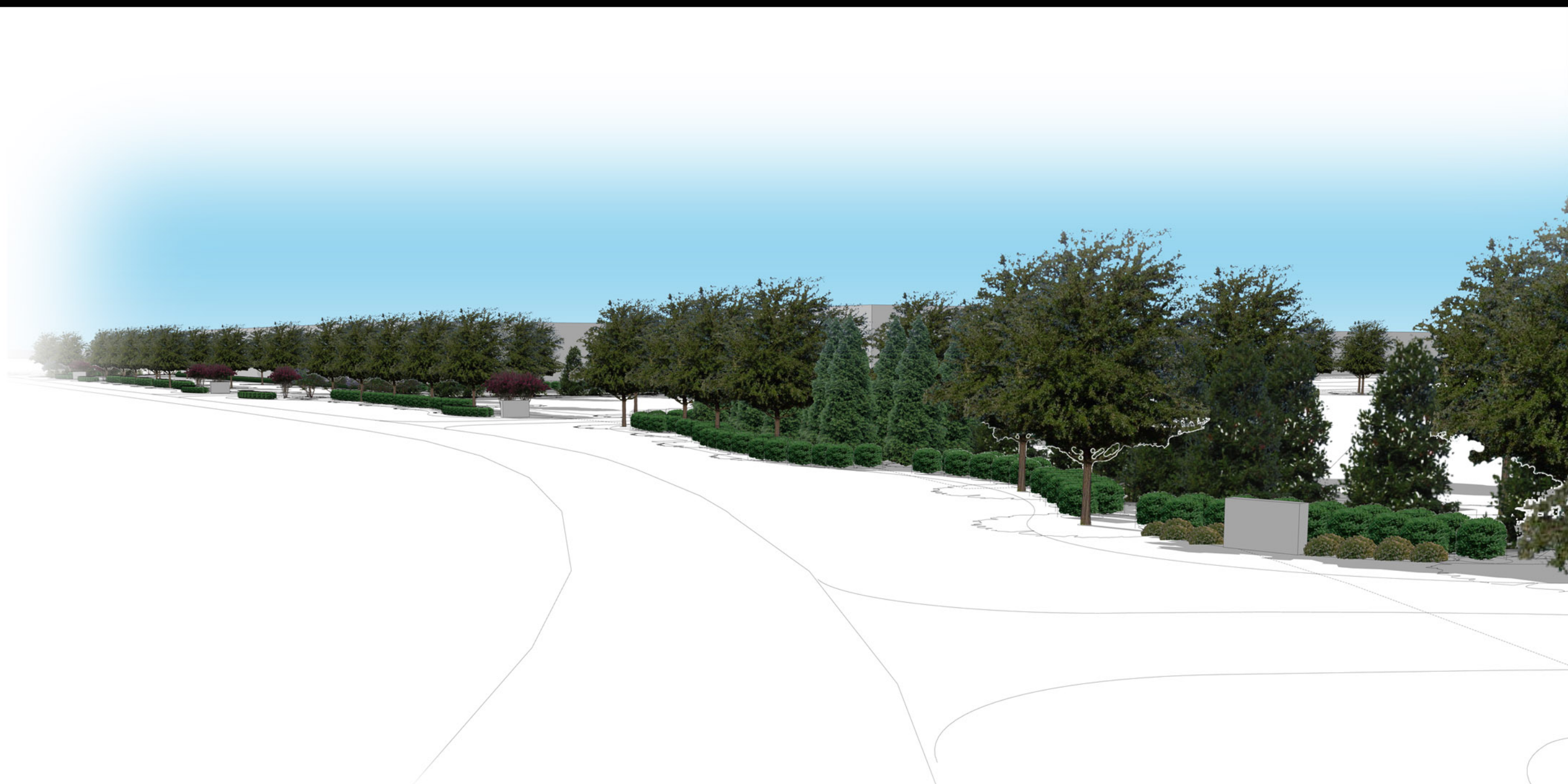
SETTINGDOWN ROAD

LP-5

LANDSCAPE
PERSPECTIVES



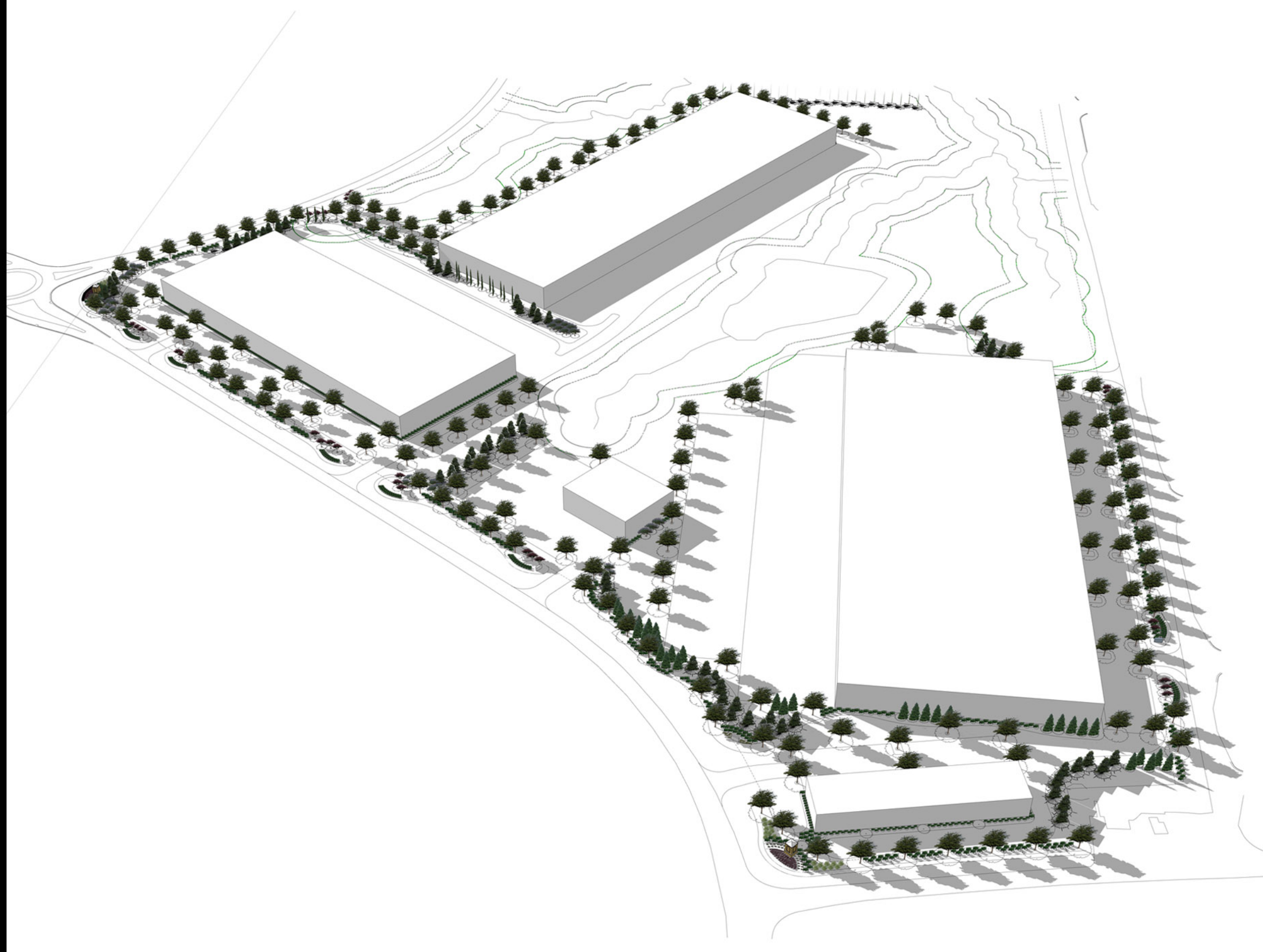
BIRDS-EYE VIEW LOOKING NORTHWEST



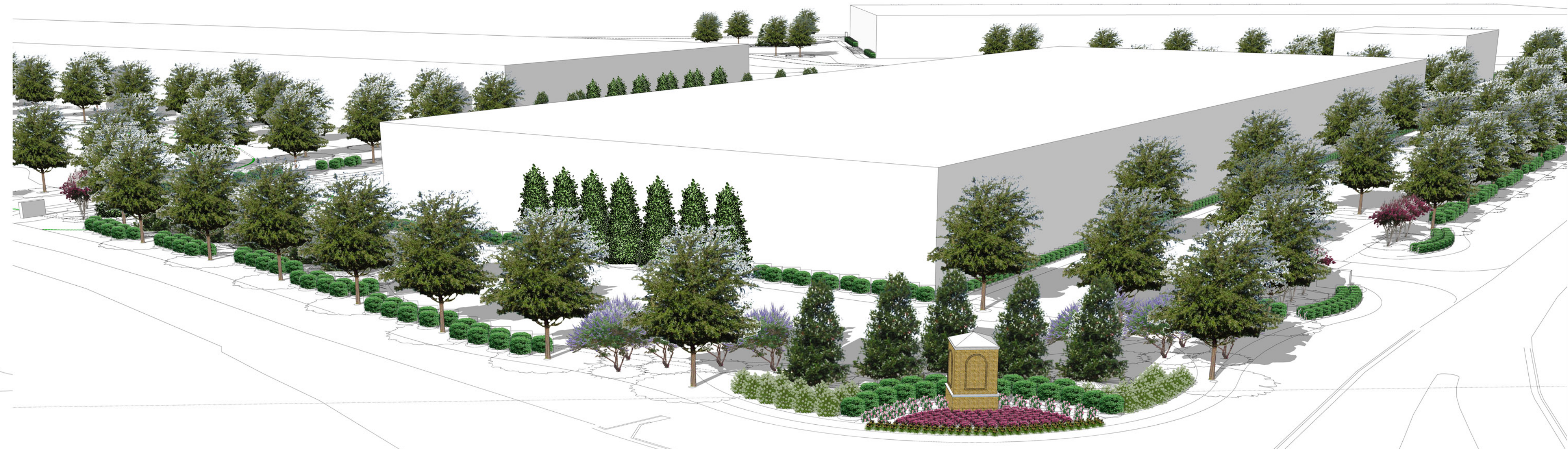
SETTINGDOWN ROAD STREET VIEW LOOKING SOUTH



VIEW LOOKING SOUTHWEST - NORTH GATEWAY



BIRDS-EYE VIEW LOOKING WEST



VIEW LOOKING NORTHWEST - SOUTH GATEWAY